

(P.B. 24, P. 117)

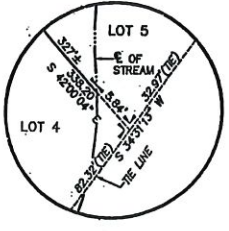
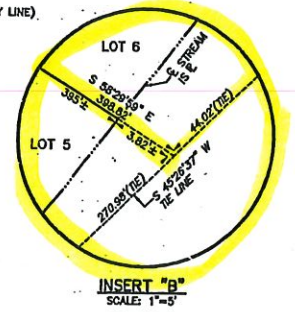
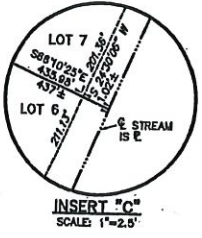
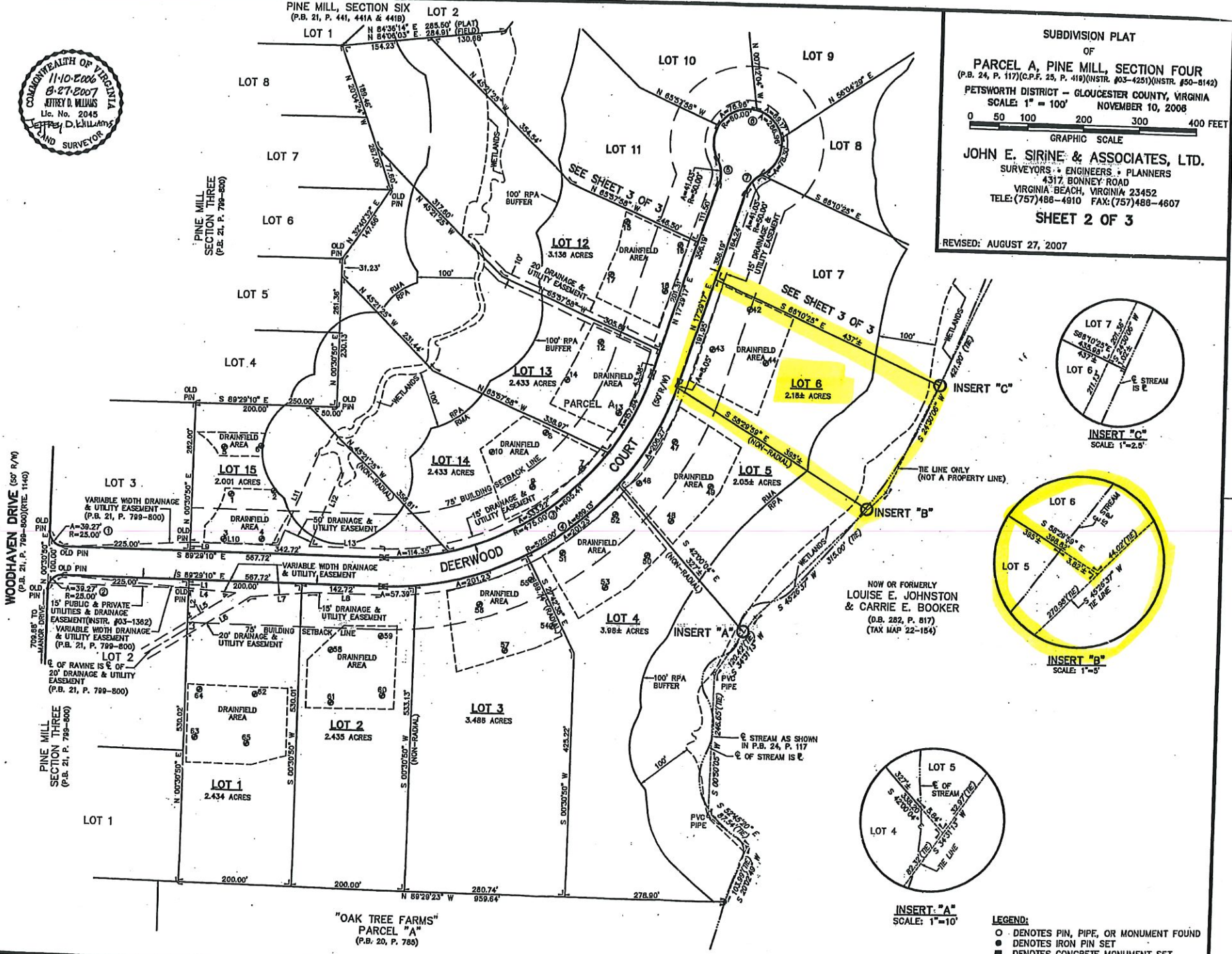


SUBDIVISION PLAT
OF
PARCEL A, PINE MILL, SECTION FOUR
(P.B. 24, P. 117)(C.P.F. 25, P. 419)(INSTR. #03-4251)(INSTR. #50-8142)
PETSORTH DISTRICT - GLOUCESTER COUNTY, VIRGINIA
SCALE: 1" = 100' NOVEMBER 10, 2008

0 50 100 200 300 400 FEET
GRAPHIC SCALE

JOHN E. SIRINE & ASSOCIATES, LTD.
SURVEYORS • ENGINEERS • PLANNERS
4317 BONNEY ROAD
VIRGINIA BEACH, VIRGINIA 23452
TEL: (757)488-4910 FAX: (757)488-4607

SHEET 2 OF 3
REVISED: AUGUST 27, 2007



NOW OR FORMERLY
LOUISE E. JOHNSTON
& **CARRIE E. BOOKER**
(D.B. 282, P. 817)
(TAX MAP 22-154)

THIS PLAT, WITH CERTIFICATE ANNEXED THEREOF,
WAS DELIVERED TO THE CLERK OF THE CIRCUIT
COURT OF GLOUCESTER COUNTY, VIRGINIA, ON THE
20TH DAY OF FEBRUARY
2008, ADMITTED TO RECORD AT 12:02
O'CLOCK P.M. AND IS RECORDED, CLERK'S
PLAT FILE 25 PAGE 726A.

- LEGEND:**
- DENOTES PIN, PIPE, OR MONUMENT FOUND
 - DENOTES IRON PIN SET
 - DENOTES CONCRETE MONUMENT SET
 - ⊙ DENOTES BORING LOCATION