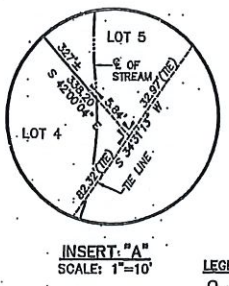
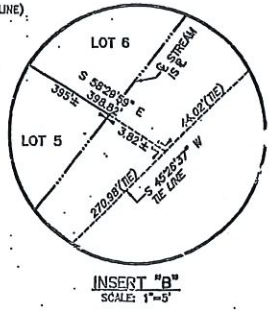
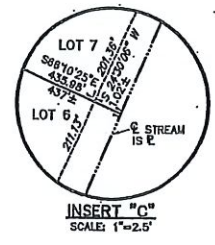
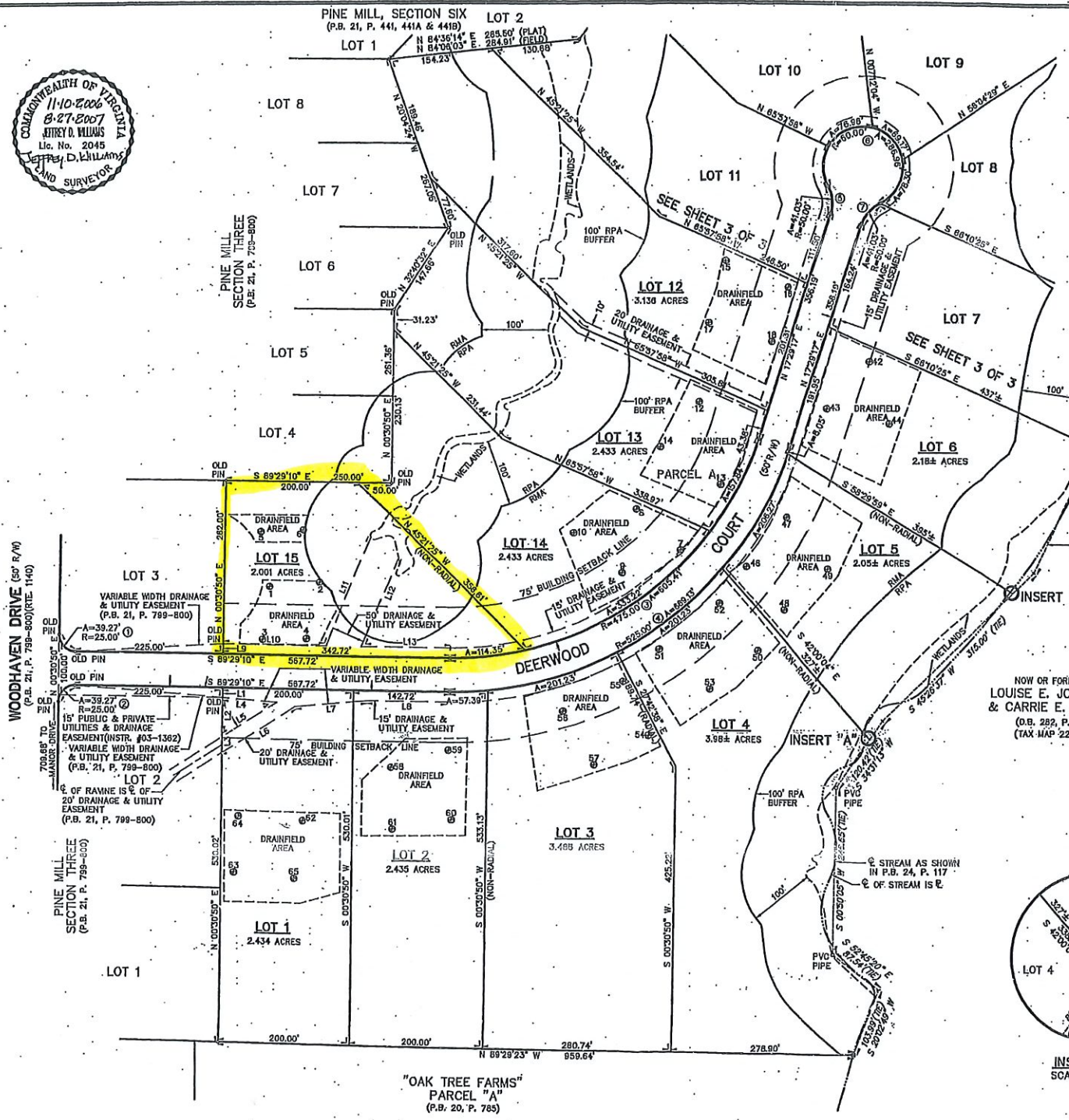


(P.B. 24, P. 117)



**SUBDIVISION PLAT**  
OF  
**PARCEL A, PINE MILL, SECTION FOUR**  
(P.B. 24, P. 117) (C.P.F. 25, P. 418) (NSTR. #03-4251) (NSTR. #50-8142)  
PETSORTH DISTRICT - GLOUCESTER COUNTY, VIRGINIA  
SCALE: 1" = 100'    NOVEMBER 10, 2008  
0 50 100 200 300 400 FEET  
GRAPHIC SCALE  
**JOHN E. SIRINE & ASSOCIATES, LTD.**  
SURVEYORS • ENGINEERS • PLANNERS  
4317 BONNEY ROAD  
VIRGINIA BEACH, VIRGINIA 23452  
TELE: (757) 486-4910    FAX: (757) 486-4607  
**SHEET 2 OF 3**  
REVISED: AUGUST 27, 2007



NOW OR FORMERLY  
**LOUISE E. JOHNSTON & CARRIE E. BOOKER**  
(O.B. 282, P. 817)  
(TAX MAP 22-154)

- LEGEND:**
- DENOTES PIN, PIPE, OR MONUMENT FOUND
  - DENOTES IRON PIN SET
  - DENOTES CONCRETE MONUMENT SET
  - ⊙ DENOTES BORING LOCATION

THIS PLAT, WHEN CERTIFICATE ANNEXED THEREBY, WAS DELIVERED TO THE CLERK OF THIS CIRCUIT COURT OF GLOUCESTER COUNTY, VIRGINIA, ON THE 20TH DAY OF FEBRUARY 2008, ADMITTED TO RECORD AT 2:22 P.M. AND IS RECORDED, CLERK'S PLAT FILE 25, PAGE 726A.

WITNESSES:  
MARGARET E. WALKER, CLERK  
BY: *Margaret E. Walker*  
INSTRUMENT # 080001061 DC